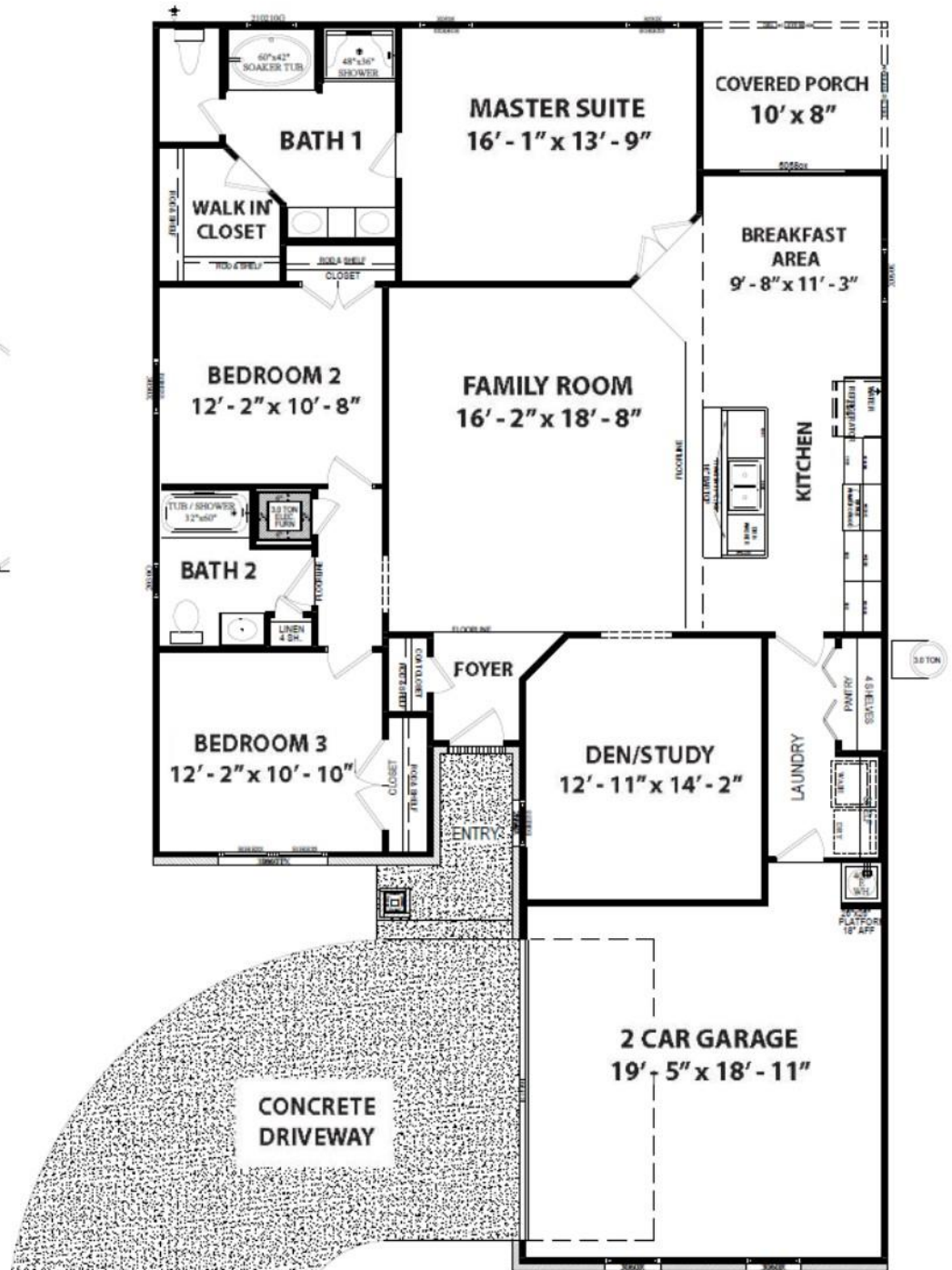




NW FLORIDA'S MOST AFFORDABLE NEW HOMES

WE HAVE *Great* PLANS FOR YOU!

THE MONTEGO PLAN# 1735  
3 BR / 2 BA / 2 CAR GARAGE



[WWW.HENRYCOMPANYHOMES.COM](http://WWW.HENRYCOMPANYHOMES.COM)

4229 HIGHWAY 90 EAST - PACE, FL 32571 1.800.42.HENRY

\*ALL DIMENSIONS ARE APPROXIMATE AND MAY VARY FROM PLANS AND MODEL HOMES. HENRY COMPANY HOMES RESERVES THE RIGHT OF PRICE, PLAN OR SPECIFICATION CHANGE WITHOUT NOTICE OR PRIOR OBLIGATION.