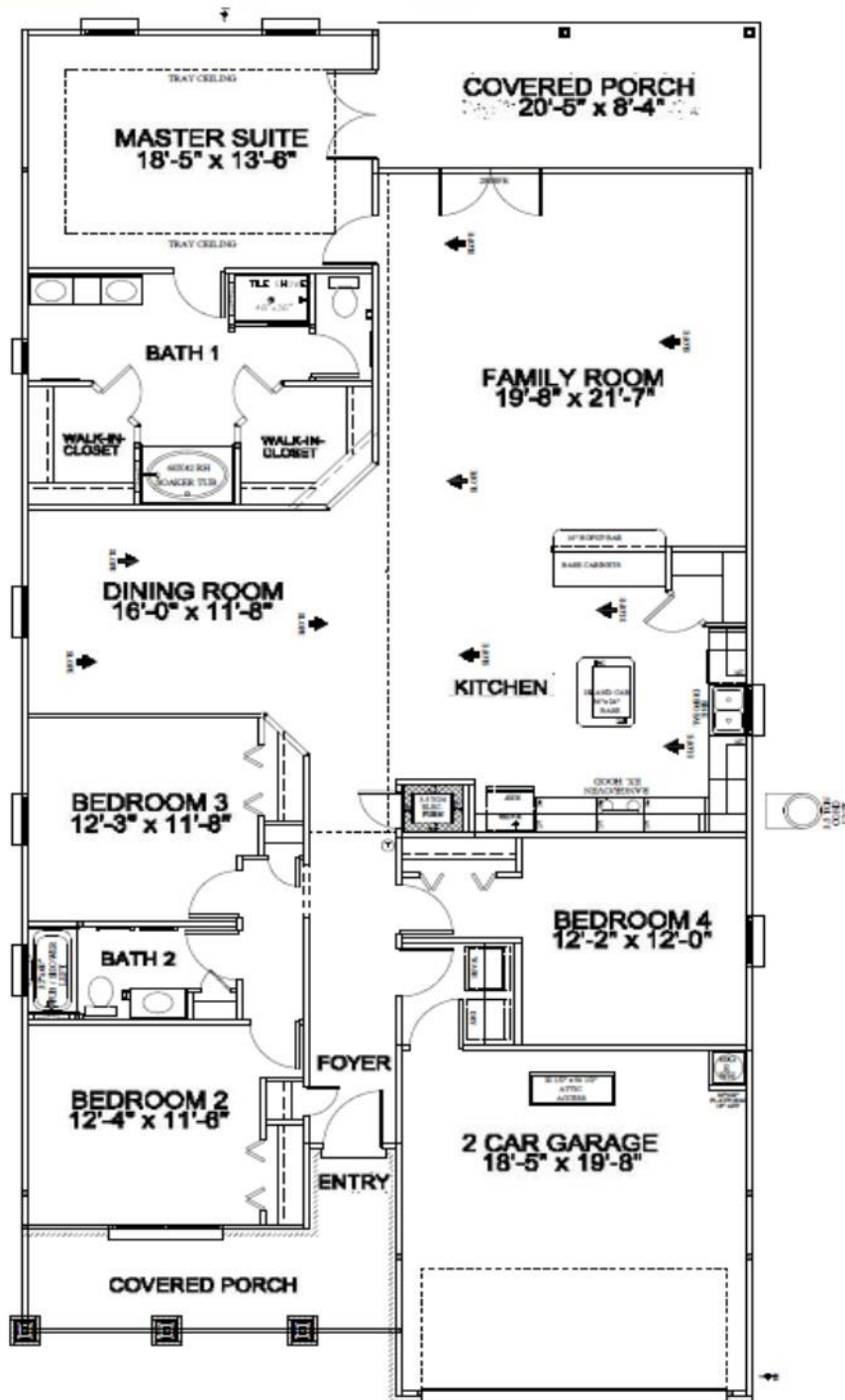




NW FLORIDA'S MOST AFFORDABLE NEW HOMES

WE HAVE *Great* PLANS FOR YOU!

THE SEXTON PLAN# 2397  
4BR / 2BA / 2 CAR GARAGE



WWW.HENRYCOMPANYHOMES.COM

4229 HIGHWAY 90 EAST - PACE, FL 32571 1.800.42.HENRY

\*ALL DIMENSIONS ARE APPROXIMATE AND MAY VARY FROM PLANS AND MODEL HOMES. HENRY COMPANY HOMES RESERVES THE RIGHT OF PRICE, PLAN OR SPECIFICATION CHANGE WITHOUT NOTICE OR PRIOR OBLIGATION. REV. 8/2014