

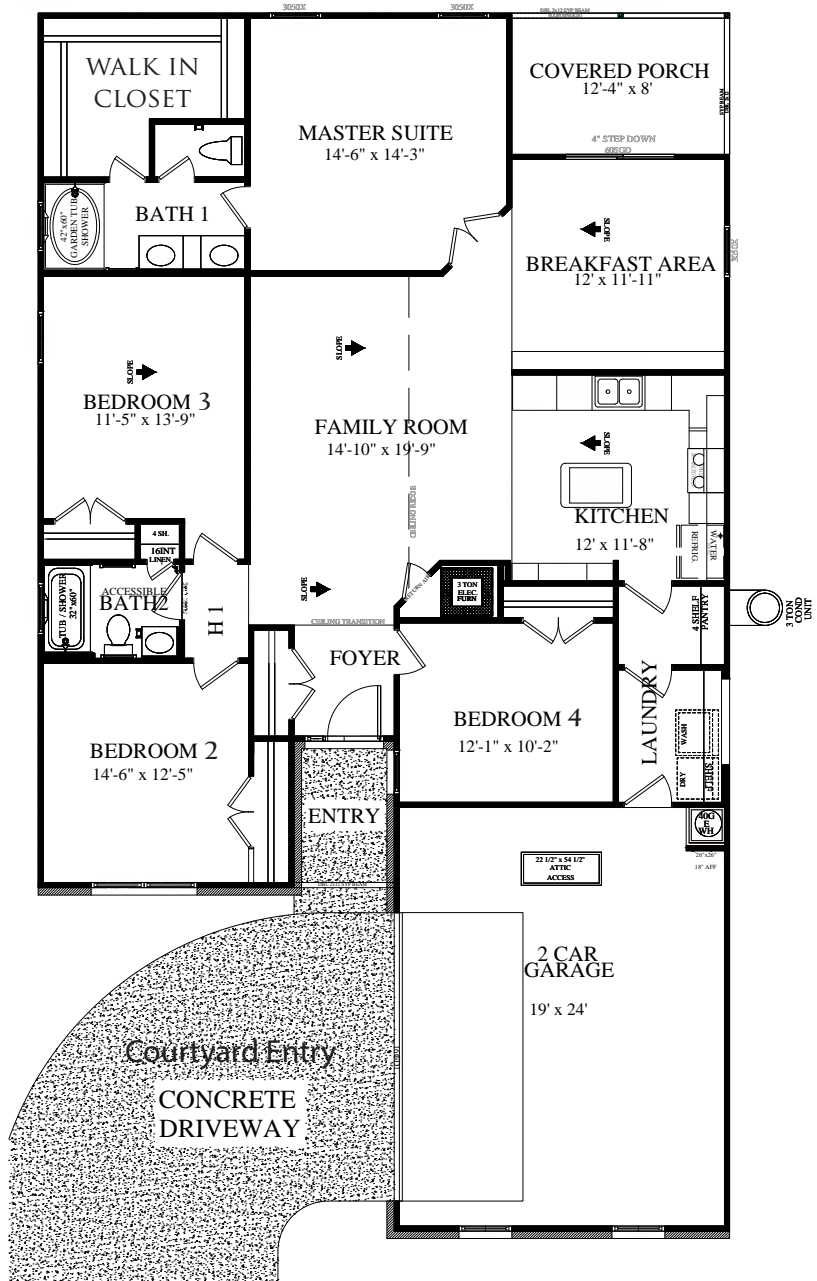
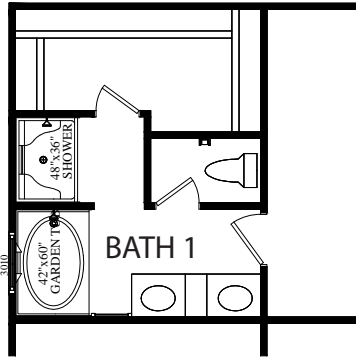


# NW FLORIDA'S MOST AFFORDABLE NEW HOMES

WE HAVE *Great* PLANS FOR YOU!

## THE BIRLINGAME PLAN# 1729 4 BR / 2 BA / 2 CAR GARAGE

OPTION  
SEPERATE SHOWER IN MASTER BATH



[WWW.HENRYCOMPANYHOMES.COM](http://WWW.HENRYCOMPANYHOMES.COM)

4229 HIGHWAY 90 EAST - PACE, FL 32571 1.800.42.HENRY

\*ALL DIMENSIONS ARE APPROXIMATE AND MAY VARY FROM PLANS AND MODEL HOMES. HENRY COMPANY HOMES RESERVES THE RIGHT OF PRICE, PLAN OR SPECIFICATION CHANGE WITHOUT NOTICE OR PRIOR OBLIGATION. REV. 3/2016